

procimmo  
group

# TRANSFORMATION OF CONTRACTUAL FUNDS

Investors Information

09.10.2024

BUILDING INVESTMENTS

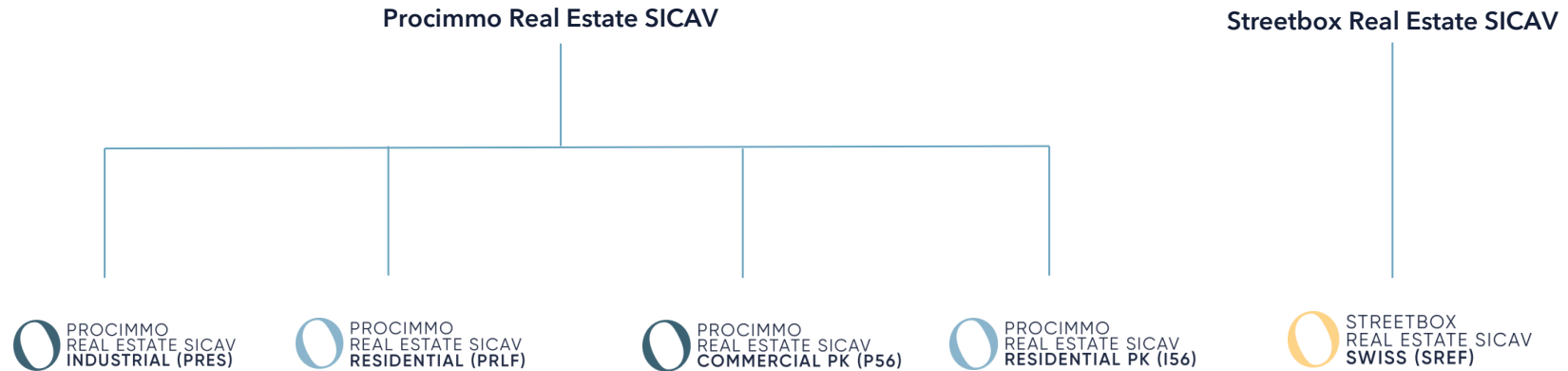


## CURRENT STRUCTURE

Products name	Short name	Stock exchange code	ISIN	Type	Annual closing
Procimmo Real Estate SICAV - Swiss Commercial Fund	PRES	PSCF	CH0033624211	Investor sub-fund Procimmo Real Estate SICAV	30.06
Procimmo Residential Lemanic Fund	PRLF	PRLF	CH0107006550	Contractual fund	31.12
Procimmo Swiss Commercial Fund 56	P56	n/a	CH0295579269	Contractual fund	31.12
Immobilier-CH pour Institutionnels 56j	I56	n/a	CH0102905822	Contractual fund	31.03
Streetbox Real Estate Fund	SREF	STBX	CH0037237630	Contractual fund	31.03

## COMBINING FUNDS INTO 2 SEPARATE SICAVS

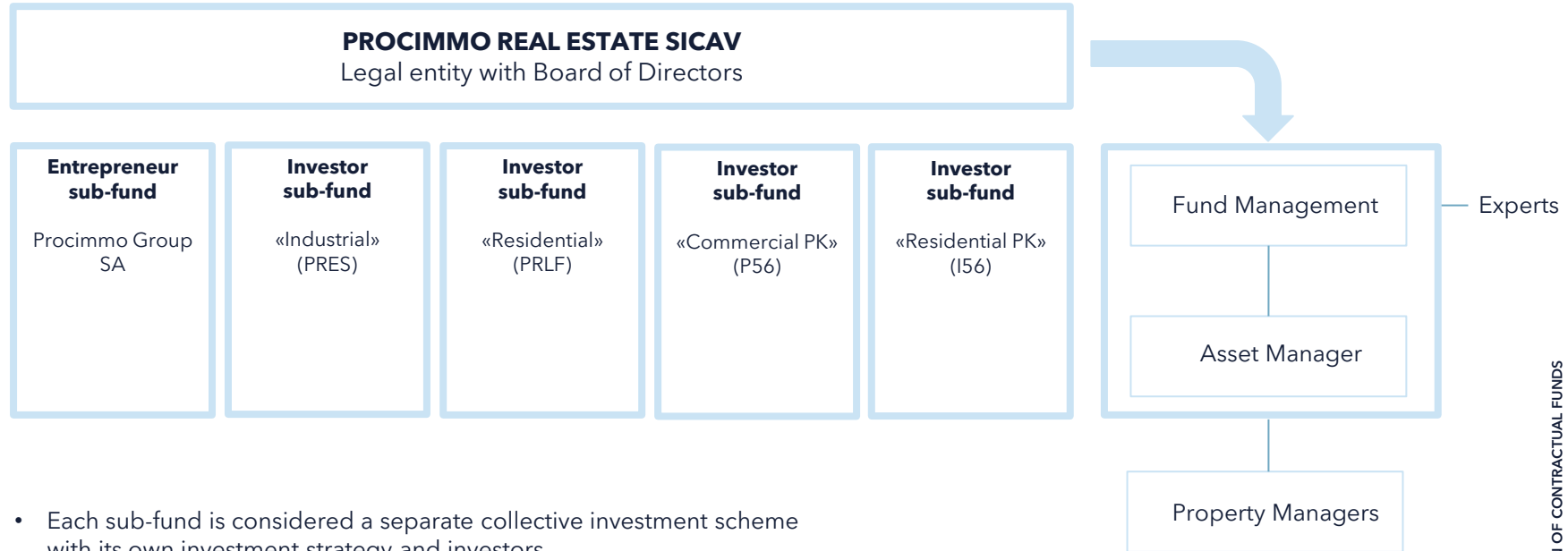
- Transformation of contractual funds Procimmo Residential Lemanic Fund (PRLF), Procimmo Swiss Commercial Fund 56 (P56) and Immobilier-CH pour Institutionnels 56J (I56) into 3 investor sub-funds of Procimmo Real Estate SICAV
- Renaming of the existing « Swiss Commercial Fund » investor sub-fund in « Industrial »
- Creation of a SICAV for Streetbox with an investor sub-fund « Swiss »



**Subject to FINMA approval, changes concerning Procimmo Real Estate SICAV are scheduled for January 2025.**  
**Subject to FINMA approval, changes concerning Streetbox Real Estate SICAV are scheduled for the 1<sup>st</sup> quarter 2025.**

## STRUCTURE OF A SICAV

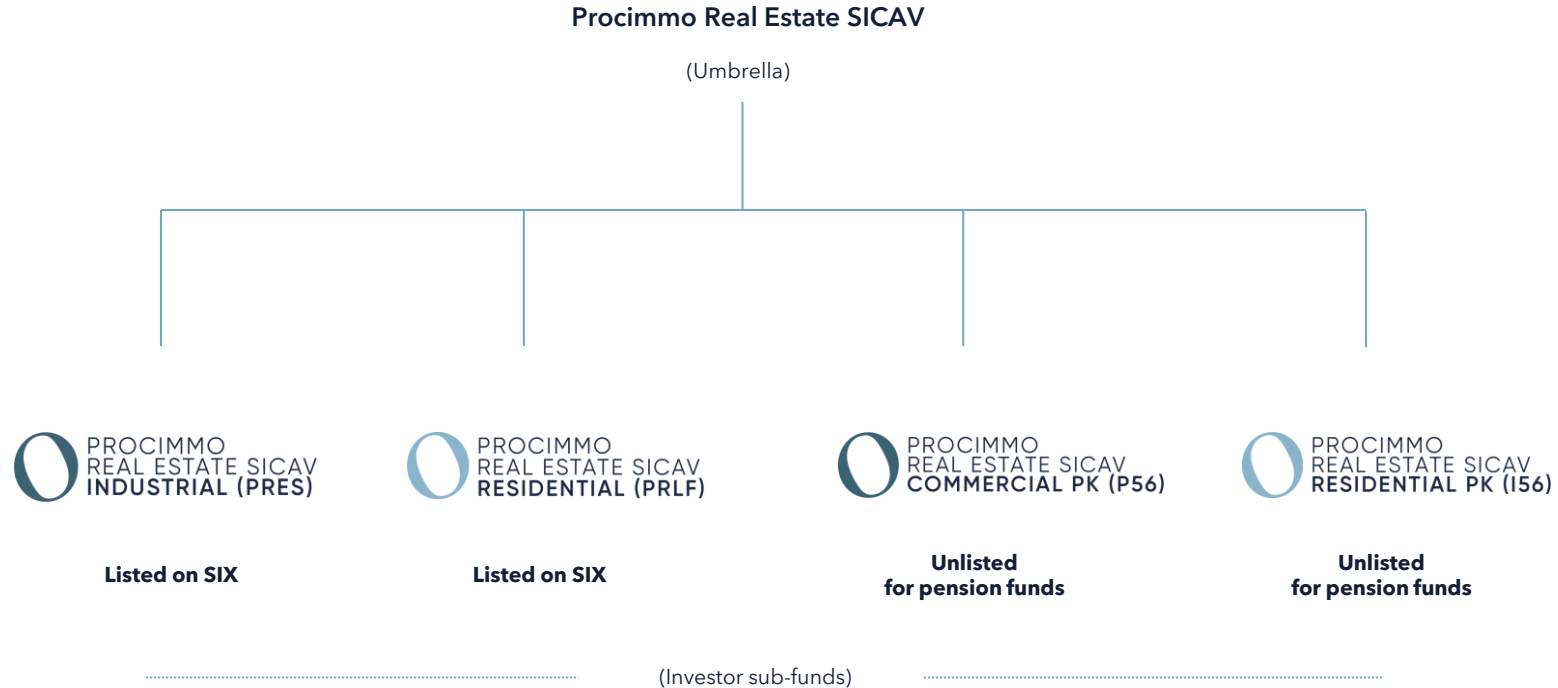
Open-ended collective investment scheme



- Each sub-fund is considered a separate collective investment scheme with its own investment strategy and investors
- The sub-funds are therefore independent of each other and are only liable for their own commitments
- The Board of Directors, the Fund Management company, the Custodian Bank, the Auditors and the Asset Manager are the same for all the sub-funds.

# PROCIMMO REAL ESTATE SICAV :

New structure (subject to FINMA approval)



**Subject to FINMA approval, changes concerning Procimmo Real Estate SICAV are scheduled for January 2025.**

## PROCIMMO REAL ESTATE SICAV :

Alignment of financial reporting calendar (subject to FINMA approval)

Products	Current closing date	30.06.24	30.09.24	31.12.24	31.03.25	30.06.25
Procimmo Real Estate SICAV - <b>Industrial (PRES)</b>	30.06	Ordinary annual report	-----	Ordinary half-year report	-----	Ordinary annual report
Procimmo Real Estate SICAV - <b>Residential (PRLF)</b>	31.12	Ordinary half-year report	-----	No report (Indicative factsheet with AMAS figures)	-----	Extended annual report (18 months)
Procimmo Real Estate SICAV - <b>Commercial PK (P56)</b>	31.12	Ordinary half-year report	-----	No report (Indicative factsheet with AMAS figures)	-----	Extended annual report (18 months)
Procimmo Real Estate SICAV - <b>Residential PK (I56)</b>	31.03	-----	Ordinary half-year report	-----	No report (Indicative factsheet with AMAS figures)	Extended annual report (15 months)

**Following these alignments, the 4 investor sub-funds of Procimmo Real Estate SICAV will close on 30.06 with results presented in a consolidated report**

## STREETBOX REAL ESTATE SICAV :

New structure (subject to FINMA approval)

### Streetbox Real Estate SICAV

(Umbrella)



**Listed on SIX**

(Investor sub-fund)

**Subject to FINMA approval, changes concerning Streetbox Real Estate SICAV are scheduled for the 1<sup>st</sup> quarter 2025**

## STREETBOX REAL ESTATE SICAV :

Financial reporting calendar (subject to FINMA approval)

Products	Closing date	30.06.24	30.09.24	31.12.24	31.03.25	30.06.25
Streetbox Real Estate SICAV - <b>SWISS (SREF)</b>	31.03	-----	Ordinary half-year report	-----	Ordinary annual report	-----



## SUMMARY OF THE NEW STRUCTURE

Full products name	Investors sub-funds names	Stock exchange code	ISIN	Type	Annual closing
Procimmo Real Estate SICAV - <b>Industrial (PRES)</b>	Industrial (PRES)	PSCF	CH0033624211	Investor sub-fund Procimmo Real Estate SICAV	30.06
Procimmo Real Estate SICAV - <b>Residential (PRLF)</b>	Residential (PRLF)	PRLF	CH0107006550	Investor sub-fund Procimmo Real Estate SICAV	30.06
Procimmo Real Estate SICAV - <b>Commercial PK (P56)</b>	Commercial PK (P56)	n/a	CH0295579269	Investor sub-fund Procimmo Real Estate SICAV	30.06
Procimmo Real Estate SICAV - <b>Residential PK (P56)</b>	Residential PK (I56)	n/a	CH0102905822	Investor sub-fund Procimmo Real Estate SICAV	30.06
Streetbox Real Estate SICAV - <b>Swiss (SREF)</b>	Swiss (SREF)	STBX	CH0037237630	Investor sub-fund Streetbox Real Estate SICAV	31.03

## DISCLAIMER

This document is provided for informational purposes only and does not constitute investment advice or a recommendation to make or liquidate an investment or to carry out any other type of transaction in relation to the SICAV. Nor does it constitute a public tender or an offer or solicitation to subscribe shares in the SICAV.

procimmo  
group

# CONTACT

**Céline Richard**

Head Marketing & Communication

PROCIMMO SA  
Rue de Lausanne 64  
1020 Renens

+41 79 273 24 66  
[cri@procimmo.ch](mailto:cri@procimmo.ch)

BUILDING INVESTMENTS